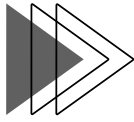


# For Sale



## Tell Crossing Business Park

- > Parcels for sale for retail and commercial development
- > Fully serviced with sewer & water, gas & power
- > Located 6.5 KM from Regina
- > Adjacent to the Pilot Butte Access Interchange, servicing Emerald Park, White City & Royal Park



The Diverging Diamond Interchange has traffic signals at the two crossover intersections,

installed at the end of Hwy 1 exit ramps at the intersections with the overpassing roadway.

The paved service road intersects Pilot Butte Access Road south of the Diverging Diamond Interchange intersection.

Retail & Commercial Lots

6.5 KM to Regina

Adjacent Interchange White City



# Tell Crossing Business Park

[scre.ca](http://scre.ca)



# For Sale



## Tell Crossing Business Park



Commercial Fully Serviced

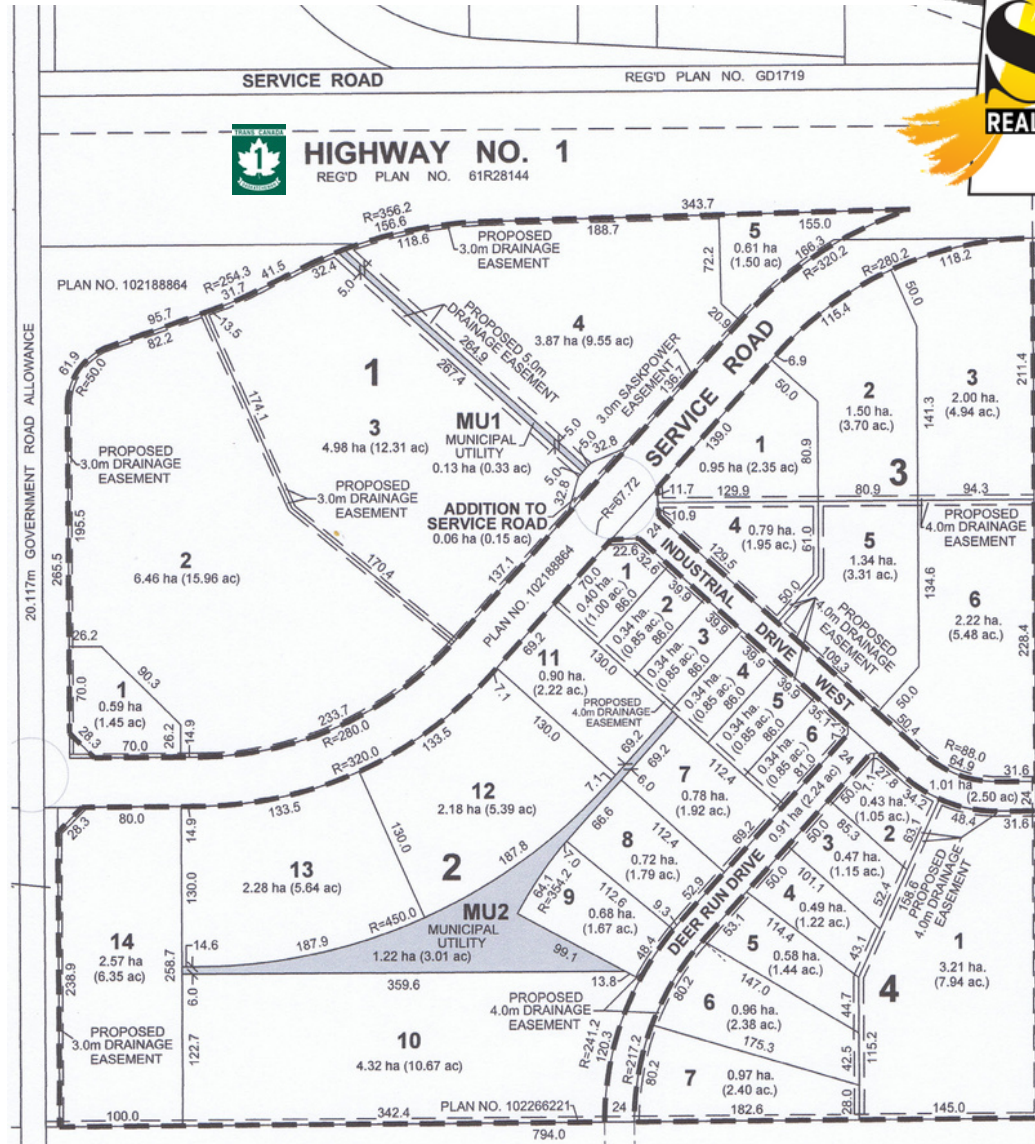
Located off the Trans Canada #1 Hwy and near the Regina Bypass

Retail High Exposure

Ease of access and ample visibility



Retail Lots



Commercial Lots

# The Saskatchewan Commitment

Linely Schaefer  
 Commercial Sales & Leasing  
 306 535 8331  
 lschaefer@scre.ca

