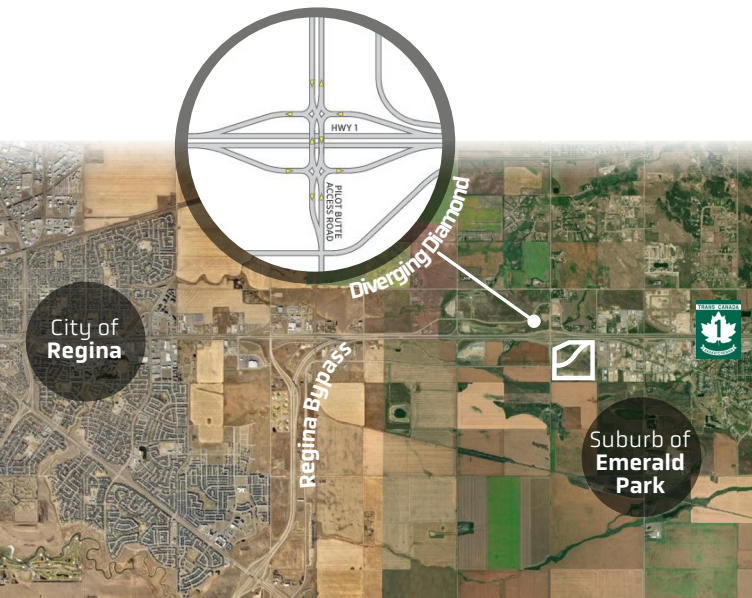


# For Sale

## Deer Run Business Park

- > Parcels **for sale** for retail and commercial development
- > **Fully serviced** with sewer & water, gas & power
- > Located **6.5 KM from Regina**
- > Adjacent to the Pilot Butte Access **Interchange**, servicing Emerald Park, White City & Royal Park



The Diverging Diamond Interchange has traffic signals at the two crossover intersections,

installed at the end of Hwy 1 exit ramps at the intersections with the overpassing roadway.

The paved service road intersects Pilot Butte Access Road south of the Diverging Diamond Interchange intersection.

Retail & Commercial Lots

6.5 KM to Regina

Adjacent Interchange White City



## Deer Run Business Park



**scre.ca**



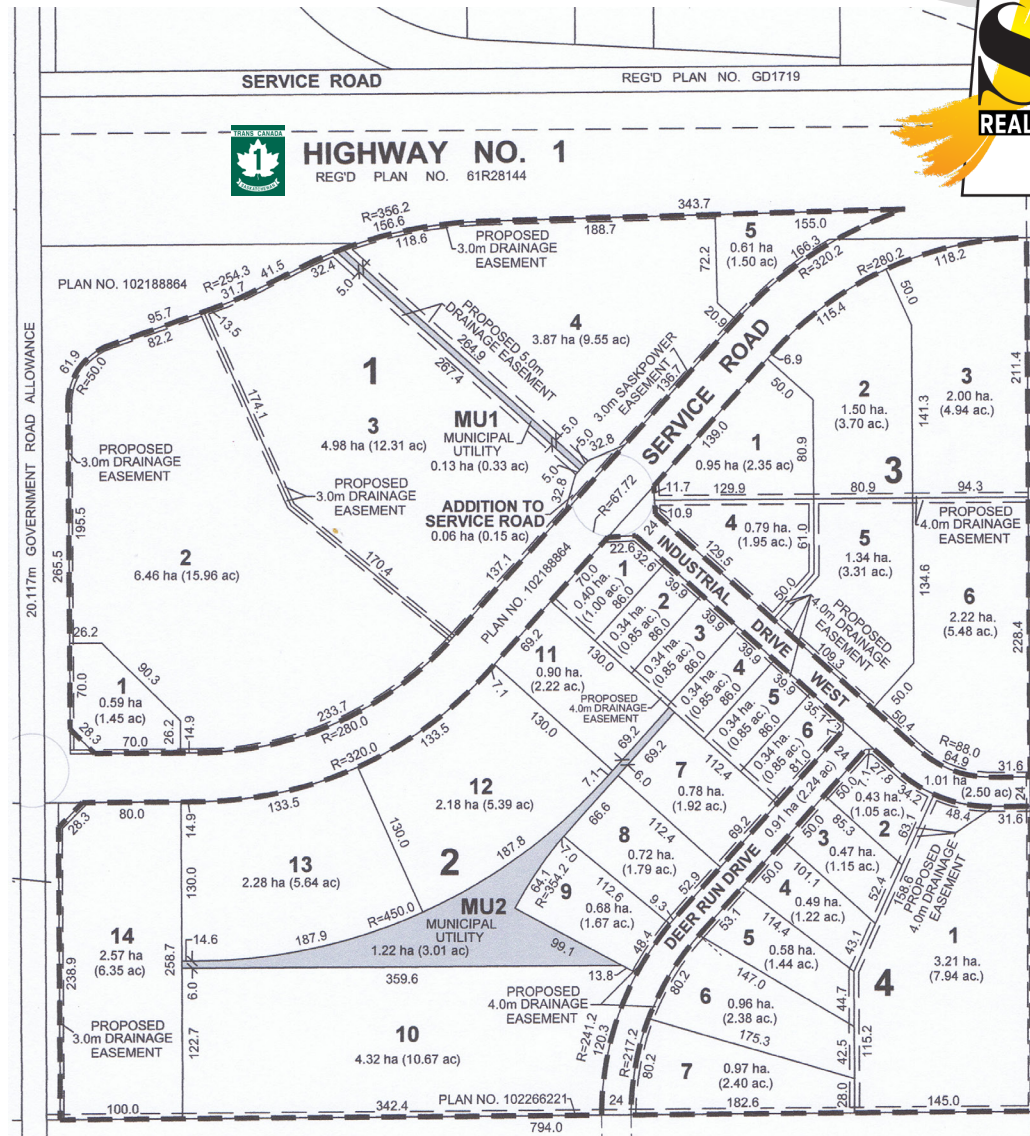
# Deer Run Business Park



**Retail**  
High  
Exposure

An aerial perspective rendering of a roundabout interchange. The roundabout is a circular island with a green lawn and several trees. Four roads converge at the roundabout. The road from the bottom left is a multi-lane highway with a dashed white center line. The road from the top is a two-lane road. The road from the right is a two-lane road. The road from the bottom right is a two-lane road. The surrounding area includes industrial buildings, parking lots, and green spaces. In the top left corner, there is a green square logo with a white maple leaf and the text 'TRANS CANADA' above it and '100th BIRTHDAY' below it. A large blue diagonal banner with the word 'Roundabout' in white text is overlaid on the bottom right corner.

# Retail Lots



# Commercial Lots



# The Saskatchewan Commitment

**Linely Schaefer**  
**Commercial Sales & Leasing**

306 535 8331

Ischaefer@scre.ca

