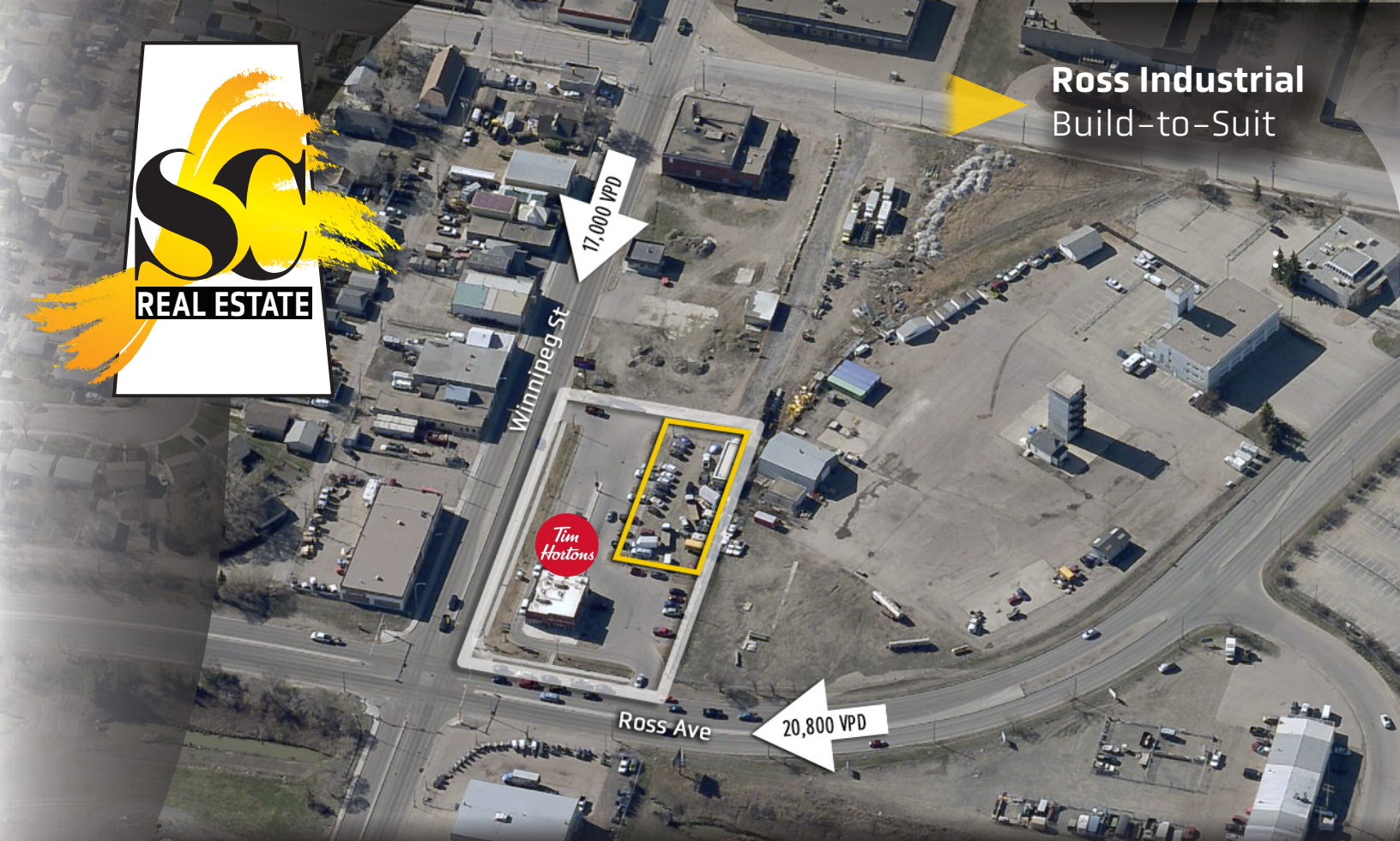




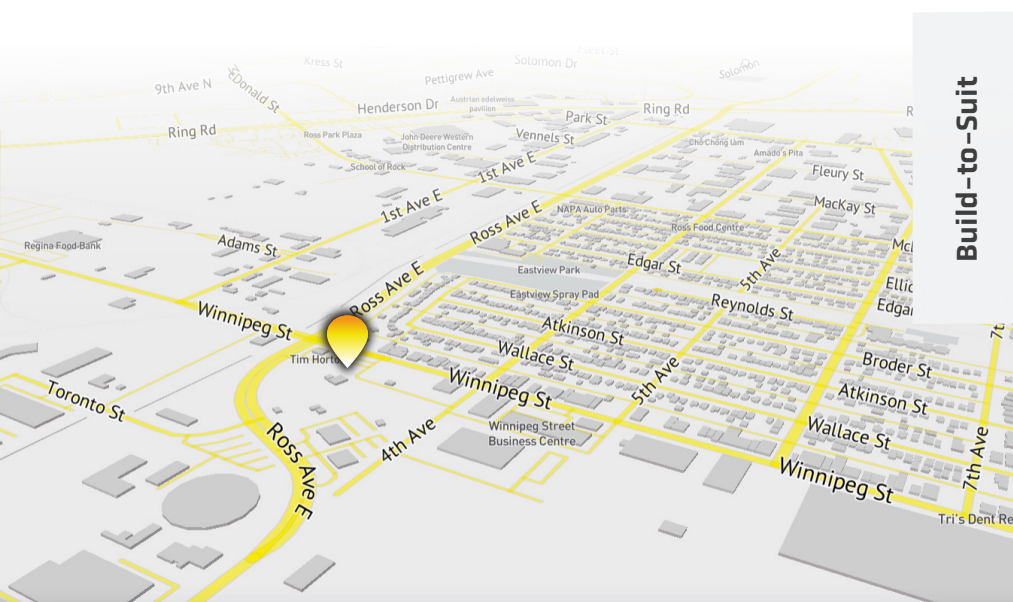
**Ross Industrial
Build-to-Suit**



Build-to-Suit

860 Winnipeg St

Come join the **high traffic corner of Winnipeg St and Ross Ave** between Tim Hortons and Discount Gas, with a traffic count of 37,800 vehicles per day. Building to be 8,000 SF with four (4) 2,000 SF bays available.



Build-to-Suit

Build Size
Up To
8,000 SF

4 Bays
2,000 SF
Each

Zoning
Light
Commercial

37,800
Vehicles
Per Day

**Surface
Parcel**
166069558

Linely Schaefer
Commercial Sales & Leasing
306 535 8331
lschaefer@scrc.ca

scrc.ca