

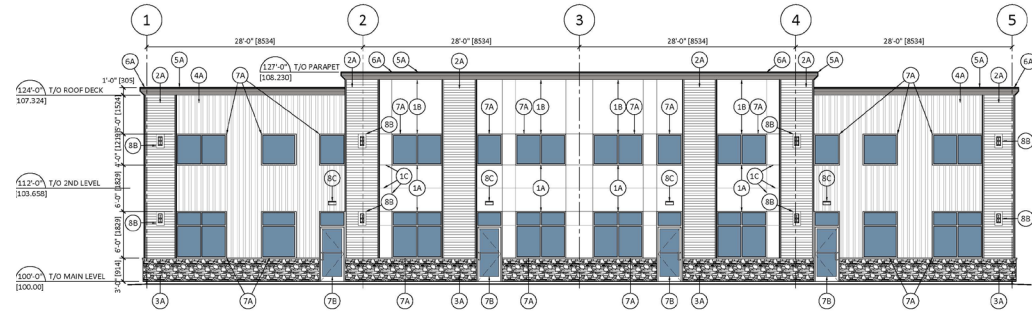
# For Lease

## BUILD-TO-SUIT on Redbear Ave

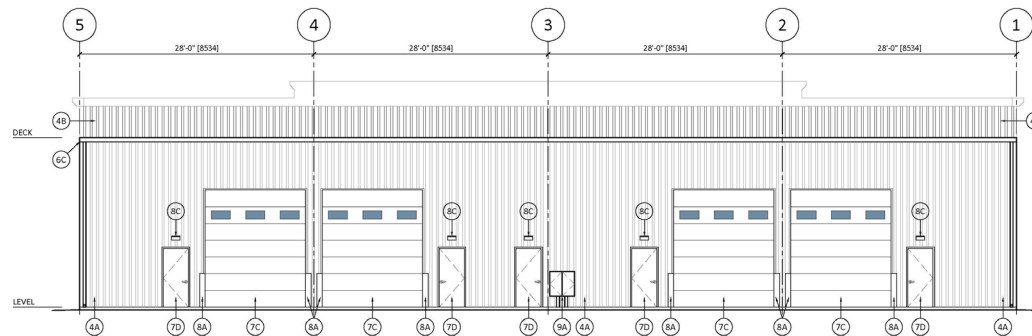
\$1750 PSF  
Lease Rate

2,538 SF  
Bay Sizes

10,155 SF  
Total of 4 Bays



SOUTH ELEVATION  
A5.0 A3.0 SCALE: 1/8" = 1'-0"



NORTH ELEVATION  
A5.0 A3.0 SCALE: 1/8" = 1'-0"

> **2202 & 2210 REDBEAR AVE** located east Ross Industrial with access to Fleet Street in northeast Regina.

> Two buildings of 10,155 sq.ft. each, zoned for heavy industrial use.



### Fleet Street Industrial

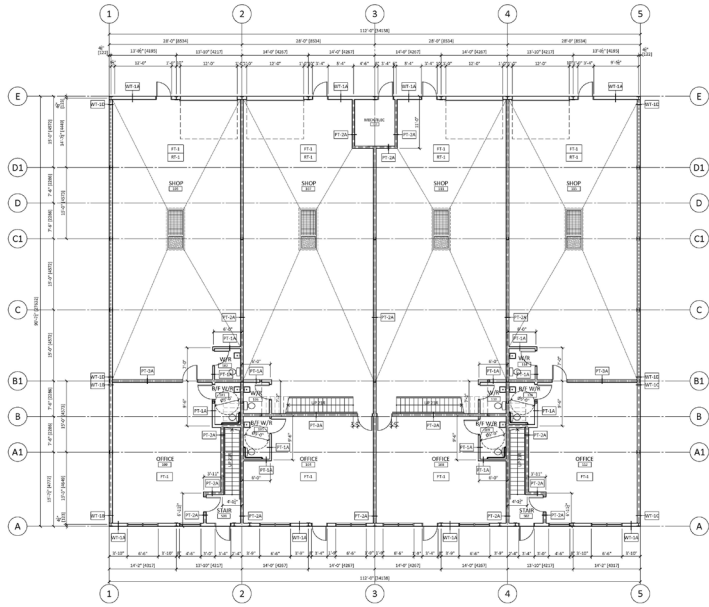
Ross Ave

**scre.ca**

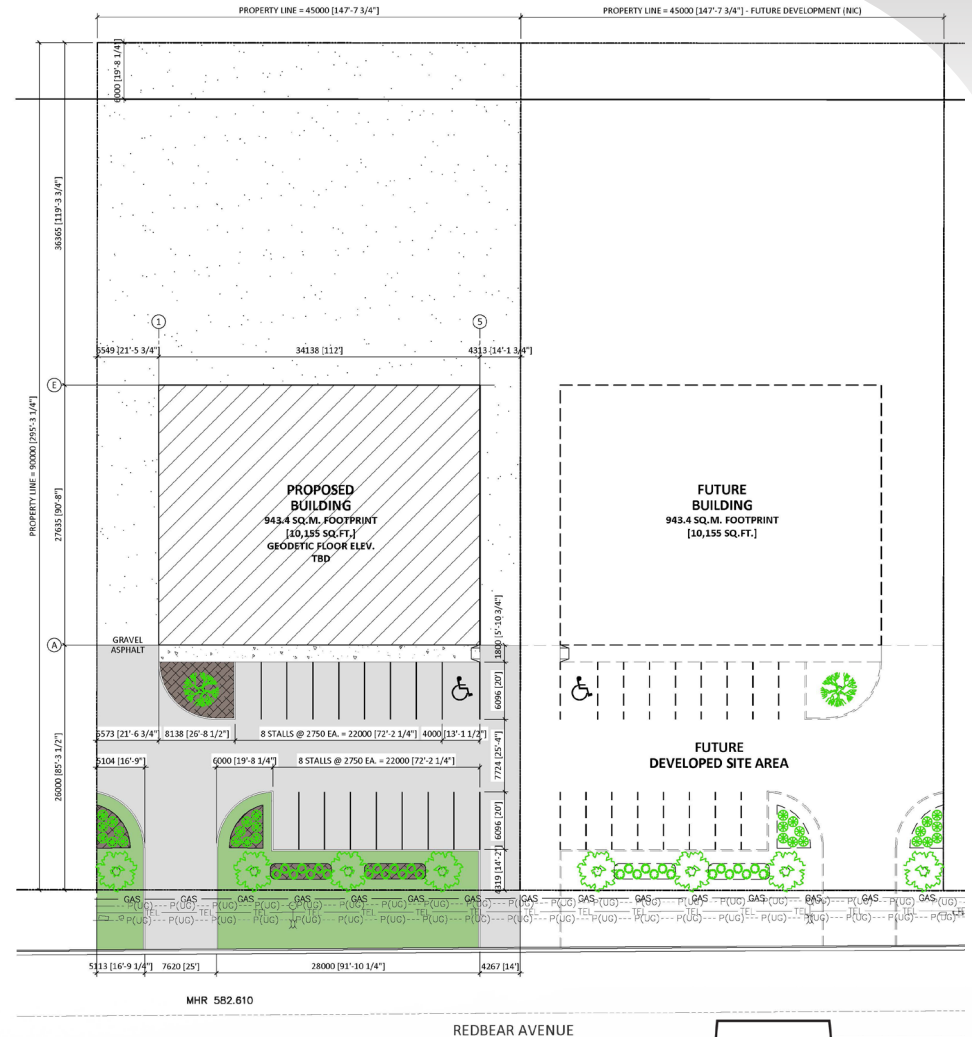
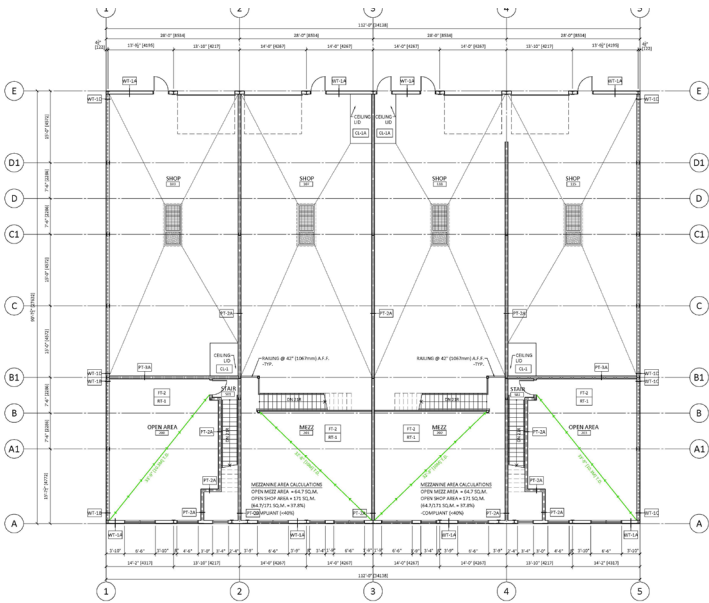
# For Lease

# BUILD-TO-SUIT on Redbear Ave

Main Level



Second Level



**CONTACT:**  
Linely Schaefer  
Commercial Sales & Leasing  
306 535 8331  
[lschaefer@scre.ca](mailto:lschaefer@scre.ca)



**scre.ca**